

# PP-4, platform

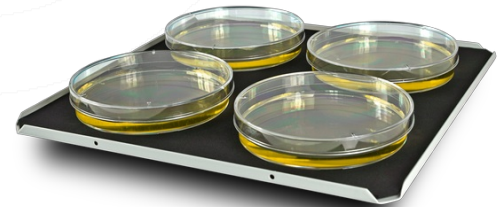
## DESCRIPTION

Flat platform with non-slip silicone mat for Petri dishes, culture flasks, agglutination cards.

## SPECIFICATIONS

Working area

215 × 215 mm



## CAT. NUMBER

BS-010108-BK

Platform PP-4

## ACCESSORIES



**ES-20**

Without platform  
Orbital Shaker-Incubator

The **ES-20** is a compact bench-top Shaker-Incubator used for mixing of biological liquids as well as for incubation and cultivation of biological liquids according to the operator set program

Built-in ...

[read more](#)



**SPM**

BS-010111-BK

double-sided adhesive mat

Double-sided adhesive mat. **SPM** is compatible with **PP-4** platform, that fits both on **PSU-10i** orbital shaker and in **ES-20** Shaker-Incubator.



**PSU-10i**

Without platform  
Orbital Shaker

Shaker **PSU-10i** provides regulated orbital motion of the platform and is designed for use both in small specialized biotechnological laboratories and in large multidisciplinary laboratories: a choice of five (5)

...

[read more](#)