

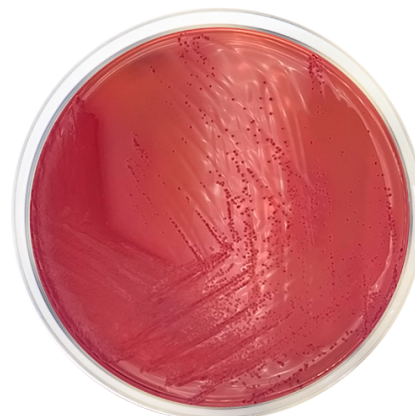
## Yersinia Selective Agar Base (CIN) ISO

N° Cat: 1126

N° Batch: 303286

Re-test Date: 3/2026

Regulations: ISO 10273 / ISO 11133



### Formula in g/l

Bacteriological agar	12	Crystal violet	0,001
Magnesium sulfate heptahydrated	0,01	Mannitol	20
Neutral red	0,03	Sodium chloride	1
Sodium deoxycholate	0,5	Sodium pyruvate	2
Yeast extract	2	Enzymatic digest of gelatin	17
Enzymatic digest of animal tissues and casein	3		

Typical formula g/L \* Adjusted and/or supplemented as required to meet performance criteria.

### Quality control

Solubility	Appearance	Color of the dehydrated medium	Color of the prepared medium	Final pH (25°)	Batch pH
w/o rests	Fine powder	Beige	Purple red	7,4±0,2	7,3

### Microbiological test

According to ISO 11133:

Incubation conditions: (30±1 °C / 24±2 h).

Inoculation conditions: Productivity qualitative (<100 CFU) / Selectivity ( 10<sup>4</sup>-10<sup>6</sup>).

Microorganisms	Specification	Characteristic reaction
Yersinia enterocolitica ATCC 23715	Good growth (2)	Colonies with dark red centers, surrounded by a transparent border.
Escherichia coli ATCC 25922	Total or partial inhibition (0-1)	
Staphylococcus aureus ATCC 25923	Total inhibition (0)	
Yersinia enterocolitica CECT 9144	Good growth (2)	Colonies with dark red centers, surrounded by a transparent border.

This certificate is an electronic copy of the certificate available in our laboratory and does not require signature.